

SarTec®

SarView™

Grain Processing Management Tool

SarView - Terminal Communications Interface

Status - Change in CD Detected

CORN		MOISTURE (%)		WATER (GPM)		SARTEMP		
#/MIN	ACTUAL	TARGET	ACTUAL	TARGET	CC/MIN	CC/TON	TANK (Gal)	
0989	19.9	20.0	09.0	08.9	081.5	165.	386	

Monitoring SarComputer status



Minimize

13

Hang Up

Cancel

Show Registers

Show Charts

Start Logging

SarTec Corporation

Phone: 800-472-7832

Fax: 763-421-2319

Website: <http://www.sartec.com>

E-mail: SarTecCorp@aol.com

© 2003 SarTec Corporation

The information contained herein is believed to be accurate and reliable; however, no warranty, either expressed or implied, is made and no freedom from liability from Patents, Trademarks, or other limitations should be inferred.



SarView™ provides a wealth of grain processing management information in real-time including the following:

- Grain type
- Current grain flow rate
- Actual grain moisture
- Target grain moisture
- Actual water delivered
- Targeted water to deliver
- SarTemp addition rate (cc/min and cc/ton)
- SarTemp tank level (gallons)

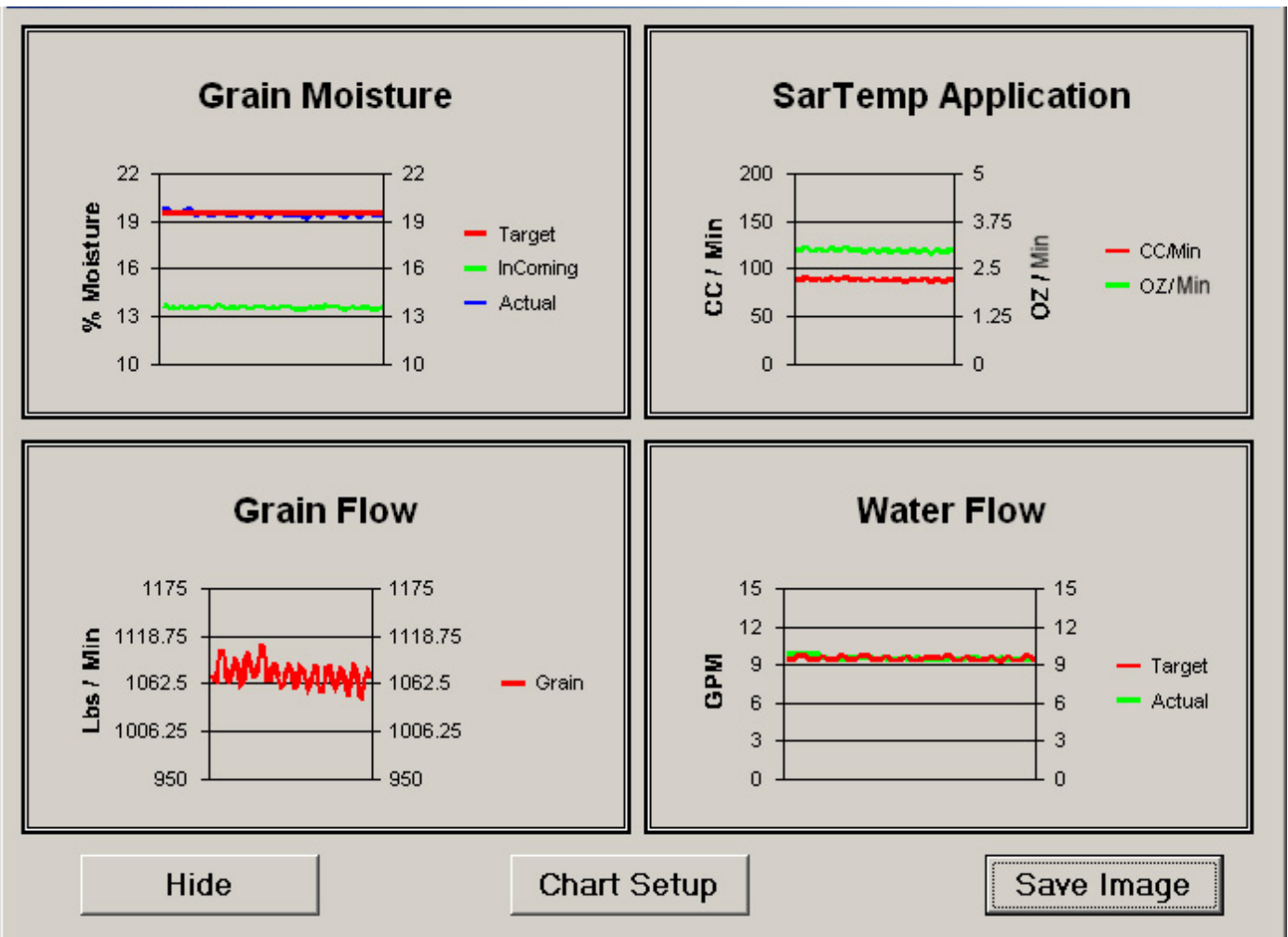
SarView - Terminal Communications Interface
 Status - Change in CD Detected

CORN		MOISTURE (%)		WATER (GPM)		SARTEMP	
#/MIN	ACTUAL	TARGET	ACTUAL	TARGET	CC/MIN	CC/TON	TANK (Gal)
0989	19.9	20.0	09.0	08.9	081.5	165.	386

Monitoring SarComputer status

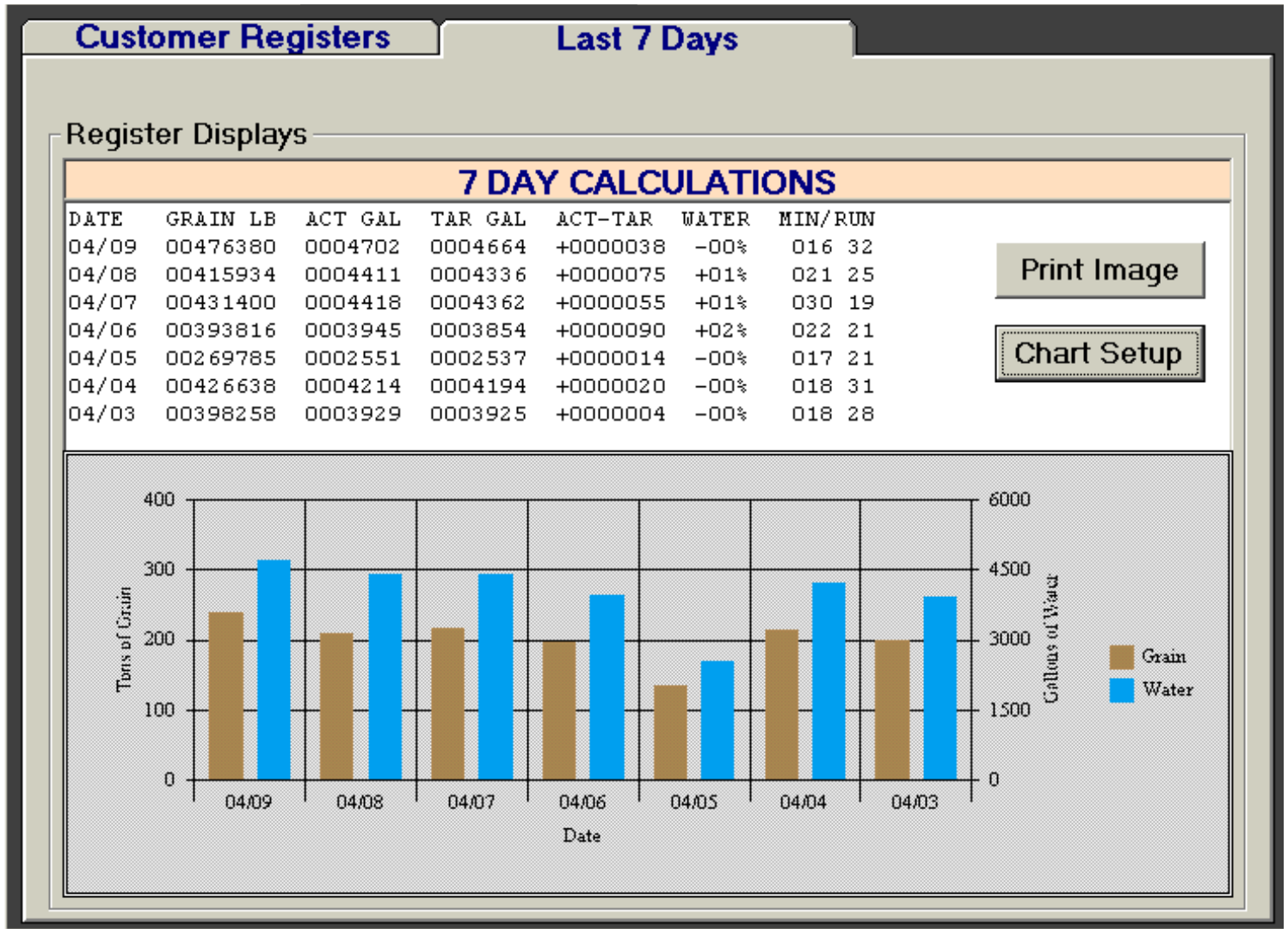
Show Charts **Real Time Data Monitoring**

SarView™ will also display up to 5 minutes of real-time data in chart format via the “Show Charts” feature. Each of the four charts (Grain Moisture, SarTemp Application, Grain Flow and Water Flow) can be expanded to full screen by double clicking on the image. The scales for these charts are user defined by using the “Chart Setup” feature. To archive the charts simply choose the “Save Image” feature and SarView™ will create an electronic snapshot for storage on your computer’s hard drive.



In this example, information was taken with permission from a current SarTec customer and represents real data downloaded from a SarTec Computerized Grain Conditioning (SarComputer) System. The wiggle that you see in the grain flow is typical for feed mill operation and over this five-minute window you can see that the grain flow varied from a high of 1,116 to a low of 1,055 pounds per minute (6% variation). It is even more common to have much larger variations in grain flow when operations switch from one grain bin to another. Thus it is critical to measure the instantaneous grain flow through the SarComputer System or it is not possible to accurately add the right amount of moisture and thereby get an accurate accounting of the grain inventory increase. At today’s grain prices tight control over grain inventory is critical to a feedlot’s profit/loss line.

SarView™ will also report summary grain processing information via the “Show Registers” feature.



SarView™ gives a seven-day history of the following items:

- Tons of grain processed
- Actual gallons of water
- Target gallons of water
- Water variance in gallons and percentage
- Average minutes per batch
- Batches run

Note: The axis scales for the lower chart are user defined via the “Chart Setup” feature.

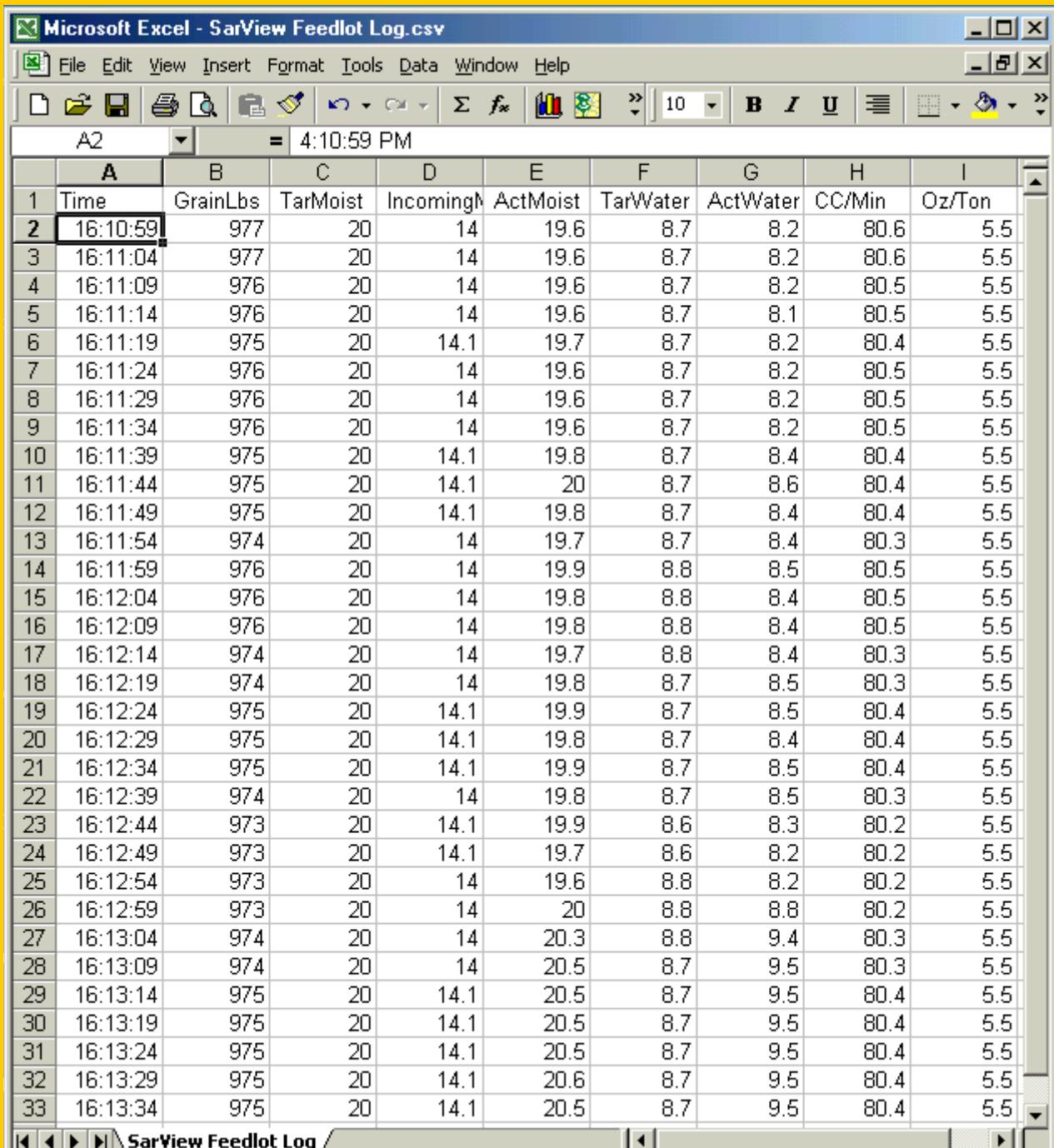
To archive the seven-day summary grain processing information simply choose the “Print Image” feature and SarView™ will create an electronic snapshot of the data table and graph for storage on your computer’s hard drive.

SarView™ represents the ultimate in grain processing management information available to a feedlot. It is a first of its kind program that gives real-time grain processing information via modem hookup to show exactly what is going on in the feed mill. The feedlot owner, feedlot manager, mill manager, nutritionist or any other authorized user can access this secure information from a laptop while on the road or from a desktop computer at their office. Best of all SarView™ is available at no charge to all SarComputer customers.

Start Logging

Creating an Extended Report

SarView™ will also log more extended amounts of real-time grain processing data via the “Start Logging” feature. When the “Start Logging” button is clicked it will turn green. This indicates that comma-separated data is being instantaneously captured into an Excel-compatible (CSV) file. Data is captured on five-second intervals. This data is time stamped and can later be used to create user-defined graphs and charts. To stop logging data click the “Start Logging” button again and the button will turn gray again.



	A	B	C	D	E	F	G	H	I
1	Time	GrainLbs	TarMoist	IncomingH	ActMoist	TarWater	ActWater	CC/Min	Oz/Ton
2	16:10:59	977	20	14	19.6	8.7	8.2	80.6	5.5
3	16:11:04	977	20	14	19.6	8.7	8.2	80.6	5.5
4	16:11:09	976	20	14	19.6	8.7	8.2	80.5	5.5
5	16:11:14	976	20	14	19.6	8.7	8.1	80.5	5.5
6	16:11:19	975	20	14.1	19.7	8.7	8.2	80.4	5.5
7	16:11:24	976	20	14	19.6	8.7	8.2	80.5	5.5
8	16:11:29	976	20	14	19.6	8.7	8.2	80.5	5.5
9	16:11:34	976	20	14	19.6	8.7	8.2	80.5	5.5
10	16:11:39	975	20	14.1	19.8	8.7	8.4	80.4	5.5
11	16:11:44	975	20	14.1	20	8.7	8.6	80.4	5.5
12	16:11:49	975	20	14.1	19.8	8.7	8.4	80.4	5.5
13	16:11:54	974	20	14	19.7	8.7	8.4	80.3	5.5
14	16:11:59	976	20	14	19.9	8.8	8.5	80.5	5.5
15	16:12:04	976	20	14	19.8	8.8	8.4	80.5	5.5
16	16:12:09	976	20	14	19.8	8.8	8.4	80.5	5.5
17	16:12:14	974	20	14	19.7	8.8	8.4	80.3	5.5
18	16:12:19	974	20	14	19.8	8.7	8.5	80.3	5.5
19	16:12:24	975	20	14.1	19.9	8.7	8.5	80.4	5.5
20	16:12:29	975	20	14.1	19.8	8.7	8.4	80.4	5.5
21	16:12:34	975	20	14.1	19.9	8.7	8.5	80.4	5.5
22	16:12:39	974	20	14	19.8	8.7	8.5	80.3	5.5
23	16:12:44	973	20	14.1	19.9	8.6	8.3	80.2	5.5
24	16:12:49	973	20	14.1	19.7	8.6	8.2	80.2	5.5
25	16:12:54	973	20	14	19.6	8.8	8.2	80.2	5.5
26	16:12:59	973	20	14	20	8.8	8.8	80.2	5.5
27	16:13:04	974	20	14	20.3	8.8	9.4	80.3	5.5
28	16:13:09	974	20	14	20.5	8.7	9.5	80.3	5.5
29	16:13:14	975	20	14.1	20.5	8.7	9.5	80.4	5.5
30	16:13:19	975	20	14.1	20.5	8.7	9.5	80.4	5.5
31	16:13:24	975	20	14.1	20.5	8.7	9.5	80.4	5.5
32	16:13:29	975	20	14.1	20.6	8.7	9.5	80.4	5.5
33	16:13:34	975	20	14.1	20.5	8.7	9.5	80.4	5.5

Call 1-800-4-SARTEC for more information on the SarView™ Grain Processing Management Tool. A SarTec representative would be happy to assist you in scheduling a free demonstration of SarView™ at your facility.

Visit our Website:
<http://www.sartec.com>

SV041003

SarTec®

SarTec Corporation
617 Pierce Street
Anoka, MN 55303

Phone: 1-800-4-SARTEC
Fax: 1-763-421-2319
E-mail: SarTecCorp@aol.com